



NIMBUS INDUSTRIES

An ISO 9001:2015 Certified Company



FROM THE LEADERSHIP DESK

At the heart of our journey since 2008 lies a strong commitment to precision, quality, and customer satisfaction. When we founded this company, our goal was clear to deliver reliable, high-precision machined components that power industries and contribute to progress.

As we look to the future, our focus remains on innovation, sustainability, and exceeding expectations because your success drives ours.

ABOUT US

Established in 2008, our organization is promoted by Mr. M. Gunasekaran and Mr. M. Kanagaraj with a vision to deliver precision-engineered components to a wide range of industries. We specialize in the manufacturing and supply of high-precision ferrous and non-ferrous machined components, catering to applications in automobile, lifts, escalators, agriculture, pumps, compressors, and general engineering sectors.

With over 90 skilled employees operating across three shifts, we are equipped to handle diverse production demands efficiently. Our machining capabilities cover component weights ranging from 50 grams to 500 kilograms, ensuring flexibility to serve both small and large-scale requirements.

Backed by a strong commitment to quality, technology, and customer satisfaction, we have steadily built a reputation for reliability and excellence in precision machining.

QUALITY POLICY

At Nimbus Industries, we are committed to manufacturing and supplying high-quality products that meet and exceed customer expectations. Our quality-driven approach is built on the following principles :

- Ensuring full compliance with all applicable statutory and regulatory requirements related to our quality management system.
- Enhancing customer satisfaction through timely delivery and consistent product excellence.
- Pursuing continuous improvement in our products, processes, and overall quality management system.
- Encouraging total employee involvement and engagement at all levels.
- Proactively identifying potential errors and implementing effective measures to eliminate them.
- Embracing technological advancements to consistently elevate the quality standards of our products.
- Through these commitments, we aim to build long-term relationships with our customers and maintain our reputation for precision, reliability, and excellence.

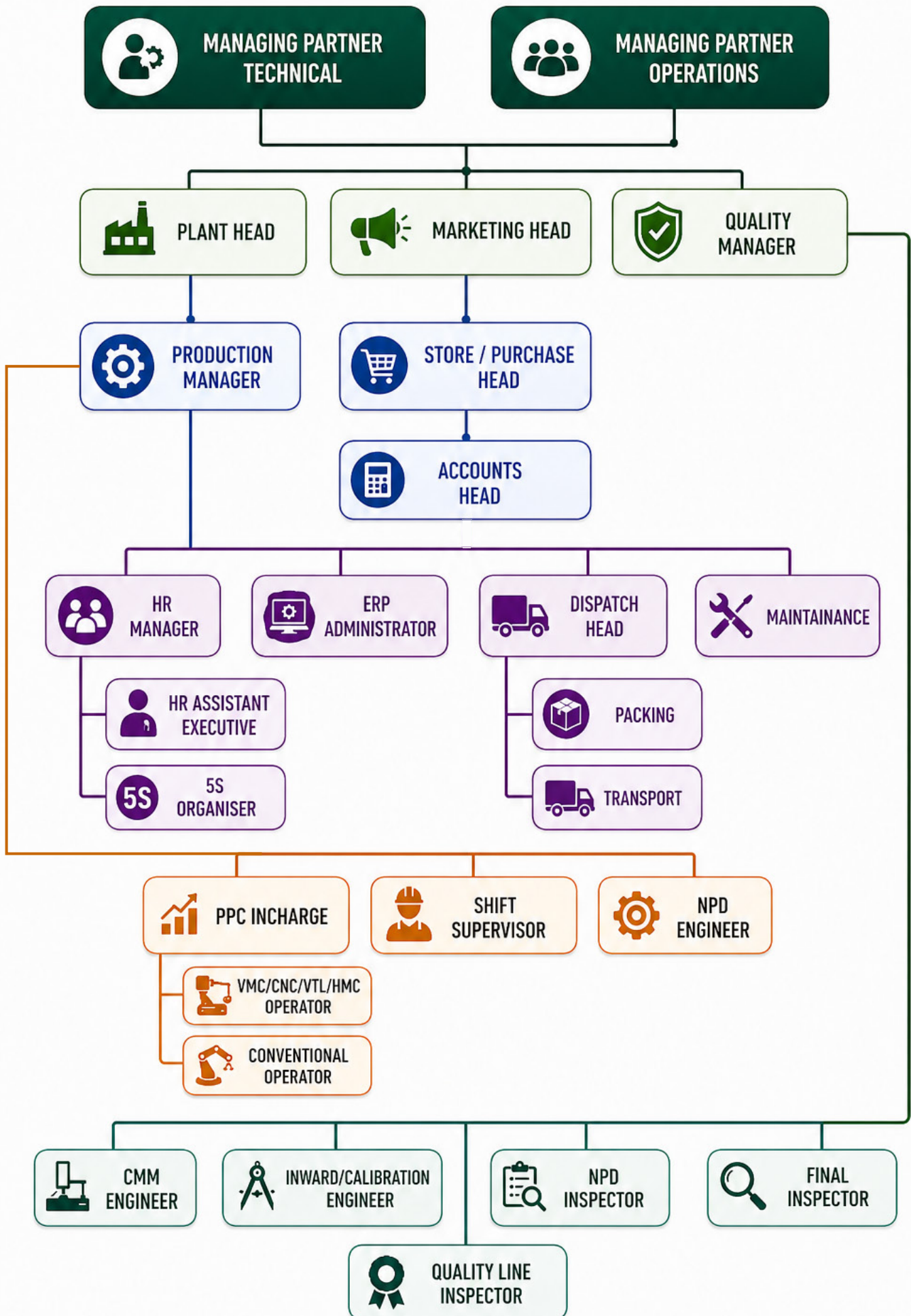
M. Gunasekaran

Managing Partner - Technical

M. Kanagaraj

Managing Partner - Operations

ORGANIZATIONAL CHART



TURNING CAPACITY

Equipped with 24 advanced Turning Centers, we ensure high-precision machining with consistent quality and quick turnaround times to meet diverse customer needs.

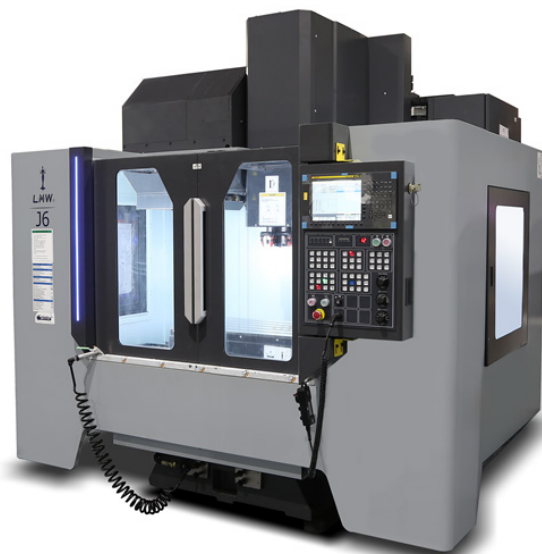


Make & Model	Specification	Qty
LMW-LL20T-L10	X-350 mm, Z-1100 mm , Chuck Dia – Ø305 mm	1
LMW-LSL-3B	X-310 mm, Z-300 mm , Chuck Dia – Ø250 mm	1
Jyoti-DX 350 -700A	X-480 mm, Z-600 mm , Chuck Dia – Ø305 mm	1
Pravan's - Hogger -31 5D	X-600 mm, Z-300 mm , Chuck Dia – Ø320 mm	1
LMW-LL 20T-L5	X-340 mm, Z-400 mm , Chuck Dia – Ø250 mm	9
LMW-LX 20T –L3	X-320 mm, Z-250 mm , Chuck Dia – Ø200 mm	1
JYOTI-DX 200-5B	X-330 mm, Z-200 mm , Chuck Dia – Ø250 mm	1
P.M.T - Super cut - 6N	X-220 mm, Z-340 mm , Chuck Dia – Ø165 mm	1
BFW - Vortex BTC-1540	X-220 mm, Z-350 mm, Chuck Dia– Ø165 mm	1
BFW Neo plus	X-250 mm, Z-350 mm, Chuck Dia– Ø200 mm	2
LMW S Turn	X-300 mm , Z-350 mm , Chuck Dia- Ø 200 mm	2
ACE Super Jobber 500LM	X-450 mm, Z-600 mm, Chuck Dia– Ø250 mm	2
HMT TSC -20 Double Spindle	X-250 mm, Z-400 mm, Chuck Dia– Ø200 mm	1

MILLING CAPACITY

With 13 high-performance Vertical Machining Centers (VMCs), we deliver precision milling solutions for complex components with accuracy, efficiency, and superior finish.

Make & Model	Specification	Qty
Mitsubishi	X-550 mm, Y-415mm, Z-550 mm	2
LMW-JV KRAFT	X-800 mm, Y-430mm, Z-500 mm	2
BFW-BMV-35-TC 20	X-400 mm, Y-350mm, Z-300 mm	1
LMW –J2 (Indexer In Build)	X -900 mm ,Y-500 mm, Z-600 mm	1
LMW-JV80 (Indexer In Build)	X-1000 mm, Y-550mm, Z-800 mm	1
LMW-JV KRAFT (4th Axis Inbuild)	X-800 mm, Y-430mm, Z-600 mm	4
BFW - Xtron 544 TC24 (4th Axis Inbuild)	X-600 mm, Y-400mm, Z-400 mm	1
LMW-J6 (4th Axis Inbuild)	X-1050 mm, Y-600mm, Z-600 mm	1



VERTICAL TURNING CAPACITY

Equipped with 2 Vertical Turning Lathes (VTLs), we efficiently handle large and heavy components with high precision and superior surface finish.



Make & Model	Specification	Qty
BFW 800H	Turning Dia 900 max, CHK- 630	1
LMW –VTL-LTV40	Turning Dia 600 max, CHK-450	1

HORIZONTAL MACHINING CENTER

Make & Model	Specification	Qty
BFW Prima 55 Pro	Double Pallet Size 630 X 630	1
	60 Tool Magazine	



EDM MACHINE (WIRECUTTING & SPARKING)



Make & Model	Specification	Qty
Cnc wire EDM Machine (SR400S+AL+Z500mm)	Size 500 x 450	2
Maximum Machining Weight	320kg	

Machine Description	Specification	Qty
Zinc die sinking EDM Machine (S-35Z)	Size 500 x 450	1
Maximum Machining Weight	320kg	



CONVENTIONAL MACHINING

We maintain a dedicated line of conventional machines to support custom operations, prototyping, and secondary processes ensuring flexibility and reliability in every stage of production.

Machine description	Make & Model	Specification	Qty
Conventional Milling –SPM Type	HMT	FN 1 & FN 2	10
Conventional Drilling Machines	Eiffco	1"	5
Conventional lathe	Rajgot	12 feet	2



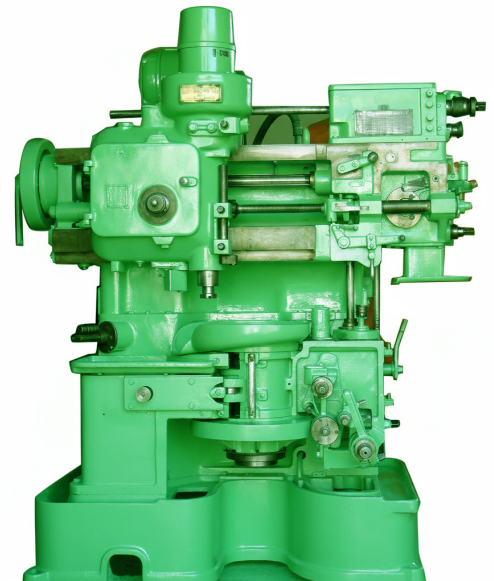
GEAR HOBBING

Machine Description	Specification	Qty	
Liebherr L401	Maximum Diameter Gear Cut	406.4 mm	1
	Maximum Rated D.P. (Module) in Steel	3.18 D.P	
	Maximum Axial Travel	304.8 mm	
--- Work Table and Spindle ---			
	Diameter of Work Table	406.4 mm	
	Diameter of Index Worm Wheel	400.05 mm	
	Diameter of Center Bore in Work Table	101.6 mm	
--- Hobbing Capabilities ---			
	Distance Between Centerline of Hob & Work Arbor	304.8 mm (max), 31.75 mm (min)	
	Taper in Table Center Bore & Hob Arbor	5 MT (Metric Taper)	
	Maximum Diameter / Length of Hob	191.9 mm or 250.1 mm	
	Maximum Shifting Travel (Hob Shift)	80 mm or 200 mm	
--- Feeds and Speeds ---			
	Hob Speed Ranges	80–480 rpm or 40–320 rpm	
	Axial Feeds (per revolution of work)	0.23–1.58 mm or 0.38–9 mm	
	Radial Feeds, Hydraulic (per minute)	0.1–12 mm or 0.7–13.46 mm	
--- Power & Weight ---			
	Total HP Rating (All Motors)	14.9 kW	
	Machine Net Weight	9,525 kg	



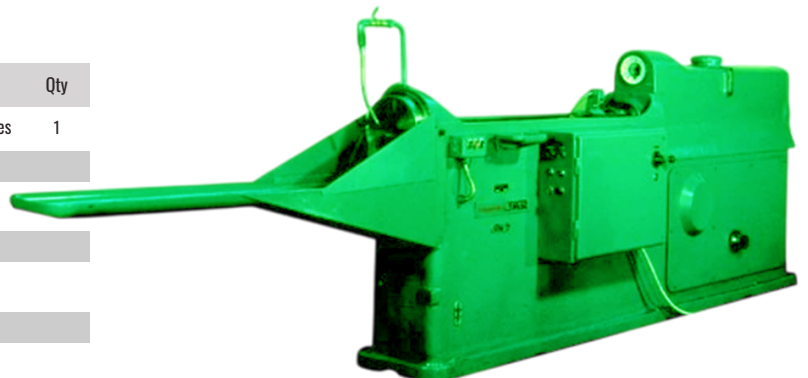
GEAR SHAPPING

Machine Description	Specification	Qty	
Liebherr L307	Maximum Diameter Gear Cut	406.4 mm	1
	Maximum Rated D.P. (Module) in Steel	2-8 D.P	
	Maximum Axial Travel	304.8 mm	
Work Table and Spindle			
	Diameter of Work Table	306.4 mm	
	Diameter of Index Worm Wheel	300.05 mm	
	Diameter of Center Bore in Work Table	101.6 mm	



HORIZONTAL BROACH MACHINE

Machine Description	Specification	Qty	
HMT Horizontal Broach Machine	Type	Splines, keyways, and holes	1
	Diameter	Up to 300mm	
	Stroke Length	1500mm	
	Pulling Force	16 Tons	
	Power Cylinder	Hydraulically Operated	
	Cutting Speed	Max 15-30 FPM	



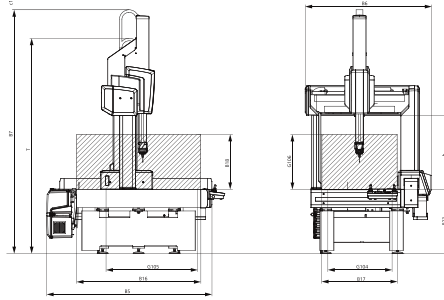
QUALITY ASSURANCE

We follow stringent quality assurance practices at every stage of production, using advanced inspection tools and processes to ensure every component meets the highest standards of precision and reliability.

Laboratory Equipment

CMM : CONTURA 9/18/8 RDS with VAST XXT TL3 Probe system

Measuring range : X=900mm, Y=1800mm, Z=800mm
Accuracy : 0.0001



QUALITY ASSURANCE

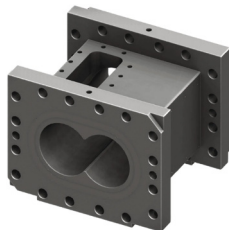
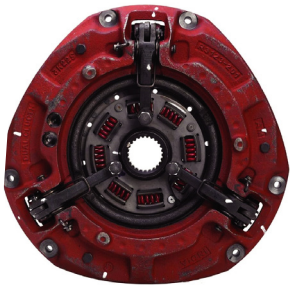
Monitoring & Measuring resource available

S.No	Instrument name	Range	Least Count	Make	Qty
01	External Micrometers	0 - 750 (All Ranges)	0.01	Mitutoyo & Insize	10
02	Digital External Micrometer	0 - 225 (All Ranges)	0.001	Mitutoyo	06
03	2D Height master	0-600	0.0001	Trimos	01
04	Air gauge units	-	0.0001	Airtronic	05
05	Variants of Bore Gauge stems	0 - 700	-	Mitutoyo	12
06	Variants of Digital & Analog Vernier	0 - 1000	0.01	Mitutoyo & Insize	06
07	Roughness tester	-	-	Zeiss	01
08	Variants of PPG	1.10-50.0	-	Zeiss	01
09	Variant of thread plug gauge	M3-M52 1"BSP-5"BSP 1/4 UNC-2 1/4 UNC	-	Baker	01
10	Variant of thread ring gauge	M3-M52 1"BSP-5"BSP 1/4 UNC-2 1/4 UNC	-	Baker	01

- All the instruments are calibrated by NABL accredited third party lab
- 100% carried critical characteristics and maintain CPK 1.66-1.7
- And also carried out attribute and variable dimension in our regular practice.

OUR PRODUCTS

We specialize in machining high-quality iron castings, delivering components with exceptional strength, durability, and dimensional accuracy for diverse industrial applications.



PRODUCT APPLICATIONS

Our precision-machined components are used across a wide range of industries, including Automobile, Lifts, Escalators, Agriculture Equipment, Pumps, Compressors, and General Engineering Applications delivering performance, reliability, and durability.

Product Application	Material
Material Lift Products	Cast Iron, Steel
Agriculture products	Cast Iron, Steel, Stainless Steel
Automobile Products	Non-ferrous, Cast Iron Steel, Hardened Steel
General Engineering Application Pump Products	Cast Iron, Steel, Stainless Steel, High.temp alloys, Nonferrous
EV Vehicle Products	Cast Iron, Aluminium, Steel, High Temp Alloys
Valve Products	Cast Iron, Aluminium, Steel.

OUR SERVICES

We Specialise in Pattern Making, Casting, Machining, for a wide range of engineering components. If you have any casting-related requirements, feel free to share your drawings - We guarantee the best offer, superior quality and on-time delivery.

Our expertise includes Pumps, Gearboxes, Valves, and Automobile Castings, ensuring precision and reliability in every project. On request, We provide Level II Certified Castings and offer specialized process such as ED Coatings & Plating to meet customer needs.

CASTING



PATTERN MAKING

MATERIAL HANDLING FACILITY

Our facility is equipped with efficient material handling systems, including overhead cranes and forklifts, ensuring safe, smooth, and timely movement of components throughout the production process.

OUR FACILITIES

Our company is equipped with state-of-the-art facilities that support efficient operations and the highest standards of quality

1. Elgi Screw Air Compressor

- 15 HP - 1 Unit
- 30 HP - 1 Unit

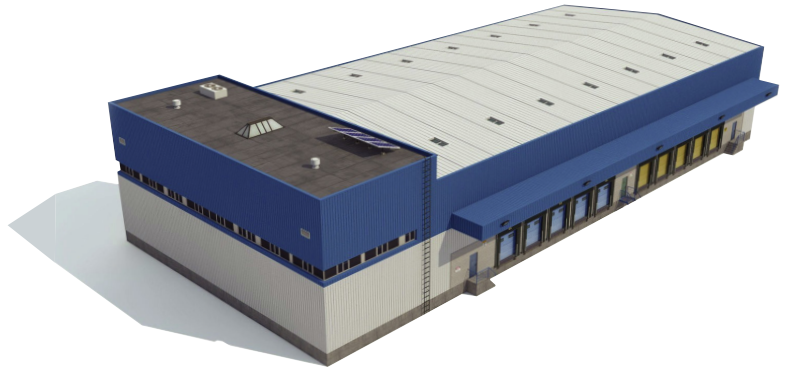


2. Generator • 63 kVA - 1 Unit



3. Total Area - 70,000 sq.ft

- Machine Shop Building Area - 24,000 sq. ft
- Other (Parking Area, Office) - 8,000 sq. ft



4. Automatic Coolant System Unit



- Our all machine pipeline connected with our automatic coolant system unit

FUTURE PLAN

2026-2027 Machine Addition Plan

As part of our ongoing commitment to growth, innovation, and meeting future demands, we have outlined a strategic machine expansion plan for 2026 -2027 . These additions will significantly boost our production capacity, precision capabilities, and operational efficiency.

Machine Expansion Plan – 2026-2027:

- Robotics and Automation - 2 Units
- ID OD Grinding Machine - 1 unit
- Surface Grinding Machine - 1 unit
- Laser marking machine – 1 unit

Laboratory setup including:

- Hardness tester
- Spectrometer
- Metallurgical microscope

This upgrade reflects our continuous pursuit of technological advancement and customer-centric manufacturing excellence.

OUR VALUABLE CUSTOMERS



SUPER SALES INDIA LIMITED



CONTACT US

M.Gunasekaran

Managing Partner - Technical

+91 9994 488 473

M.Kanagaraj

Managing Partner - Operations

+91 9843 241 549

GST No : 33AKCPG8443P1ZV

nimbus.cbe@gmail.com | kanagarajnimbus@gmail.com

www.nimbusindustries.in

D.No.5/101-15, Molapalayam Road, Vellanaipatti Post, Vellanaipatti, Coimbatore- 641 048.



Scan To Reach Us